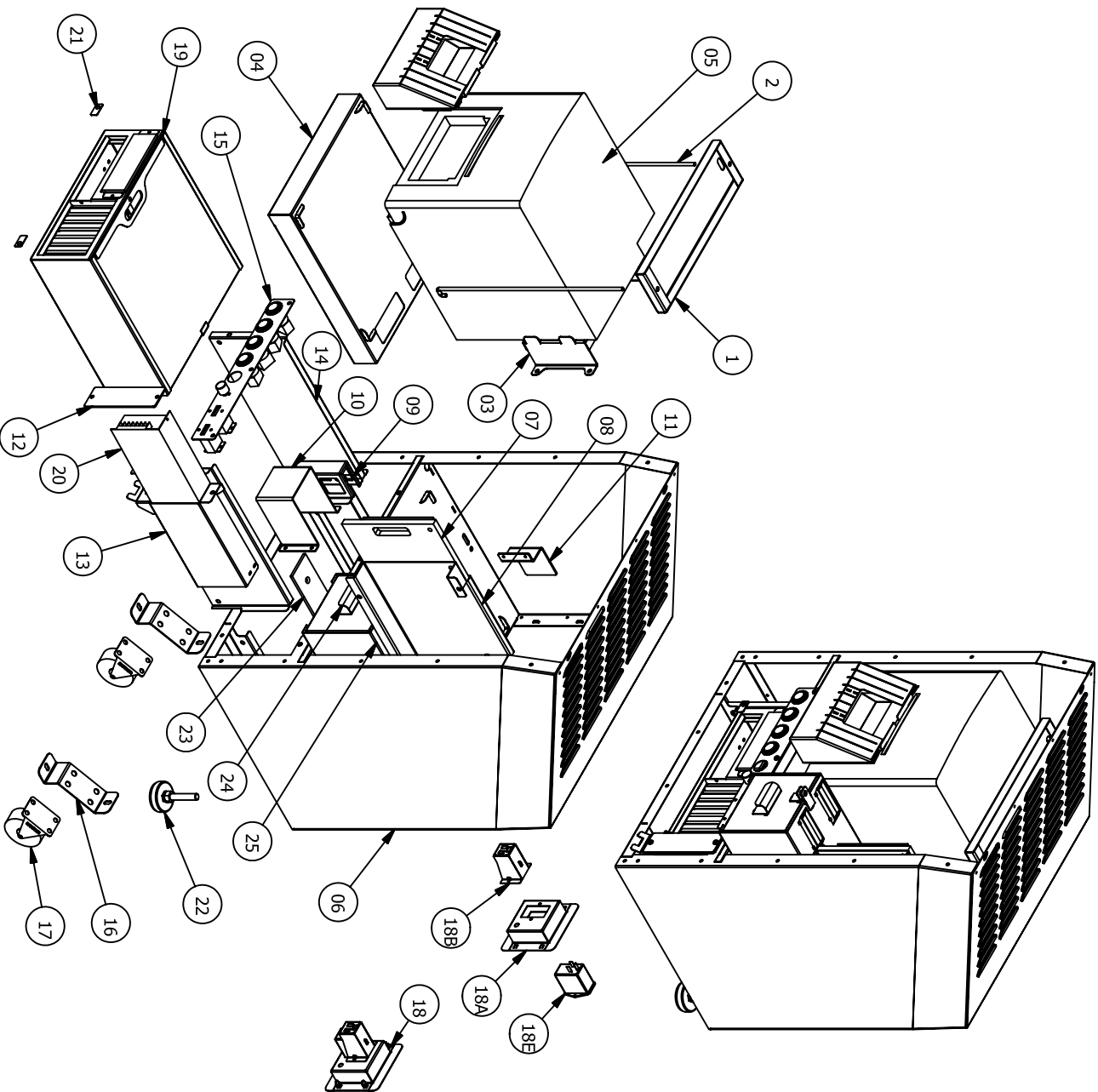


SNAP SHOT

Page 02 of 04

NO	PART NO	DESCRIPTION	QTY
23	MS1-FP-011-R0	CASH BOX BASE	1
24	MS1-SA-004-R0	COVER CASH BOX SA	1
25	MS1-SA-002-R0	HOUSING CASH BOX SA	1



NO	PART NO	DESCRIPTION	QTY
01	MS1-FM-034-R0	PRINTER CLAMP 1	1
02	MS1-FM-037-R0	PRINTER CLAMP 2	2
03	MS1-FM-048-R0	BACK PRINTER SUPPORT	1
04	MS1-SA-013-R0	BASE PRINTER MITSUBISHI SA	1
05	EAI391	PRINTER MITSUBISHI CP9550 DW & PAPER BIN	1
05A	EAI392	ROLL PAPER PRINTER CK 9046 (MITSUBISHI)	1
06	MS1-SA-003-R4	LOWER PANEL ASSEMBLY	1
06A	MS1-SA-003-R4	LOWER PANEL SA	1
06B	AT3955	SIDE NETWORK LEFT	1
06C	AT3955	SIDE NETWORK RIGHT	1
06D	AT3953	REAR CABINET NETWORK	1
07	MS1-ASSY-018-R0	PCB BASE ASSEMBLY	1
07A	MS1-FM-001-R1	PCB BASE	1
07B	BA1980	PCB CPU FB80	1
07C	EA0029	PCB AMPLIFIER FB29	1
08	MS1-SA-010-R0	PCB BASE SA	1
09	MS1-FM-027-R0	LCD ADAPTOR BRACKET	1
10	MS1-FP-012-R1	POWER CORD COVER	1
11	MS1-FP-018-R0	RELAY COVER	1
12	MS1-FP-007-R1	POWER SUPPLY COVER	1
13	MS1-FM-033-R3	POWER SUPPLY BRACKET	1
14	MS1-FM-046-R0	PC BOX BRACKET	1R&1L
15	MS1-ASSY-001-R0	SERVICE BRACKET ASSEMBLY	1
15A	MS1-FM-029-R1	SERVICE BRACKET	2
15B	EA1252	COIN COUNTER 12V REAR MOUNTING	2
15C	EE0689	POTENTIOMETER CARBON	1
15D	EP0602	KNOB VOLUME	1
15E	EA0520	SWITCH SMALL ROUND GREEN BUTTON	1
15F	EA0519	SWITCH SMALL ROUND RED BUTTON	1
15G	EA0522	SWITCH SMALL ROUND YELLOW BUTTON	1
15H	EA0521	SWITCH SMALL ROUND WHITE BUTTON	1
16	MS1-FM-039-R1	CASTOR BASE 2	2
17	HM0062	CASTOR 3" FIX	2
18	MS1-ASSY-011-R0	DB BOX ASSEMBLY	1
18A	MS1-FM-026-R0	DB BOX FRONT	1
18B	MS1-FM-025-R1	DB BOX HOUSING	1
18C	EA1356	BINDING POST	1
18D	EA1358	SPLIT CORE EMI FILTER FOR CE MACHINE	1
18E	EA0649	RECTIFIER NOISE EMI FILTER	1
18F	MS1-H001	DB BOX HARNESS	1
18G	EA0635	POWER LED MOLDED IEC TO 3 PIN USA	1
18H	EA0636	POWER LED MOLDED IEC TO 2 PIN IND0	1
18I	EA0637	POWER LED MOLDED IEC TO 3 PIN AU	1
18J	EA0639	POWER LED MOLDED IEC TO 3 PIN UK	1
19	MS1-ASSY-006-R0	PC BOX ASSEMBLY	1
20	EA1015	POWER SUPPLY DC 12V S 150	1
21	MS1-FM-024-R0	PC BOX STOPPER	2
22	HM0002	RUBBER FOOT MOUNTING	4